

180 / 50 Ton Overhead Ladle Crane

Quantity: Two (Shaking ladle east & BOF east)

Make: DEMAG

Long travel span: 21,336 m

Total Weight: 362,5 tons each

DRIVE DETAILS

	Motors	Gearbox ratios	Oil Volumes
MAIN HOIST	2 x 160Kw 730 rpm	72.6 / 1	180 litre
AUX HOIST	1 x 160Kw 730 rpm	53.1 / 1	144 litre
MAIN CROSS TRAVEL	1 x 37Kw 730 rpm	75.6 / 1	16 litre
AUX. CROSS TRAVEL	1 x 11Kw 730 rpm	45.1 / 1	7 litre
LONG TRAVEL	4 x 37Kw 730 rpm	29.2 / 1	11 litre / box

MAIN HOIST

Brake drum 584mm diameter
Brake coupling 584mm diameter Bibby type
2 x rope drums – left hand and right hand 1050 mm diameter
Reduction gearbox
12 x sheave wheels 952mm diameter
4 x ropes 38mm diameter 170m length
2 x 90 ton plate hooks

MAIN HOIST CROSS TRAVEL

Crab span 7.924m
Thruster brake 381mm diameter
Brake coupling 381mm diameter Bibby type
2 x Cardan shafts 2895mm length
Triple reduction gearbox
838mm diameter drive and trailing wheel arrangement

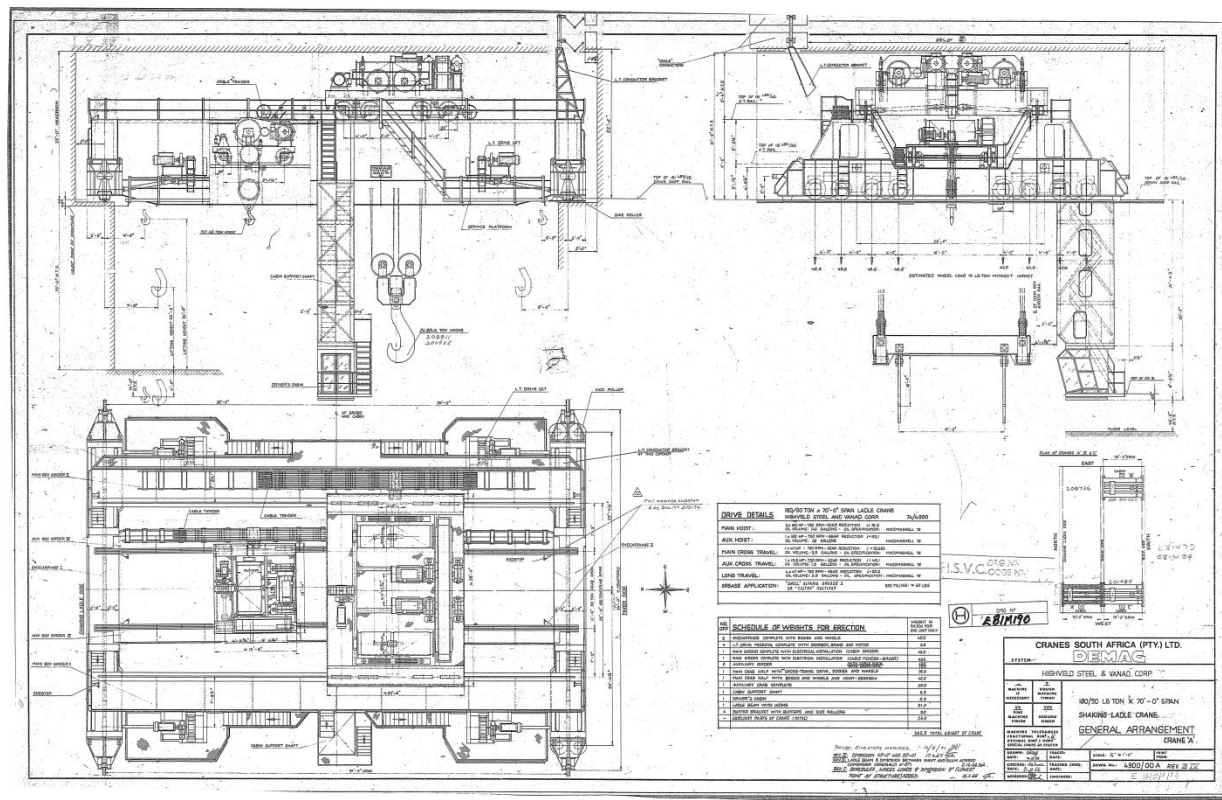
AUXILIARY HOIST

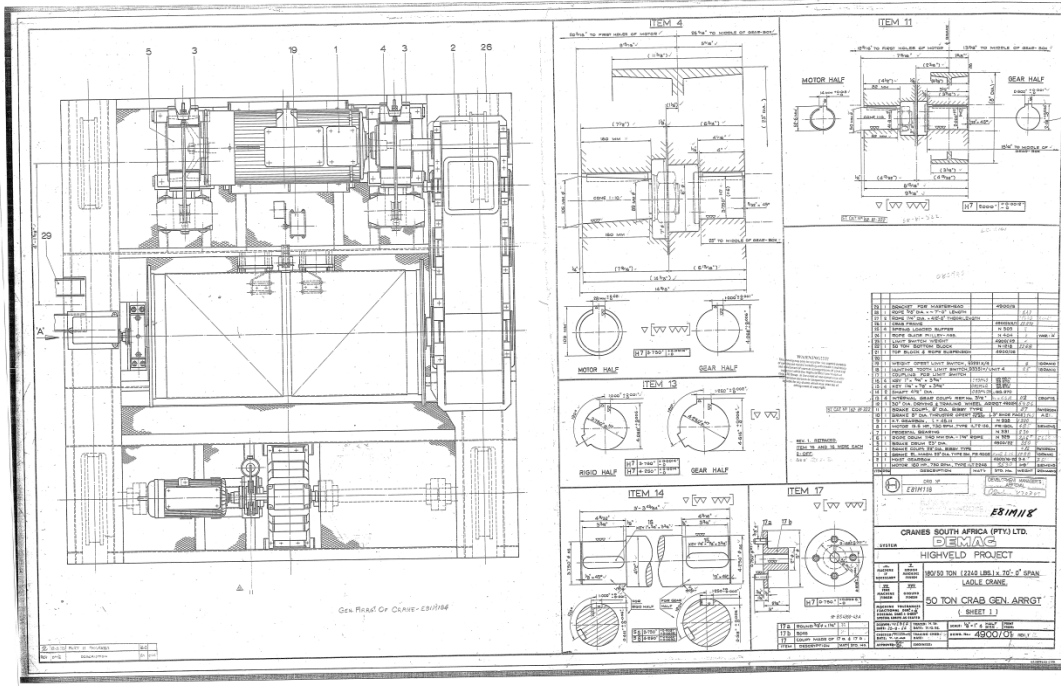
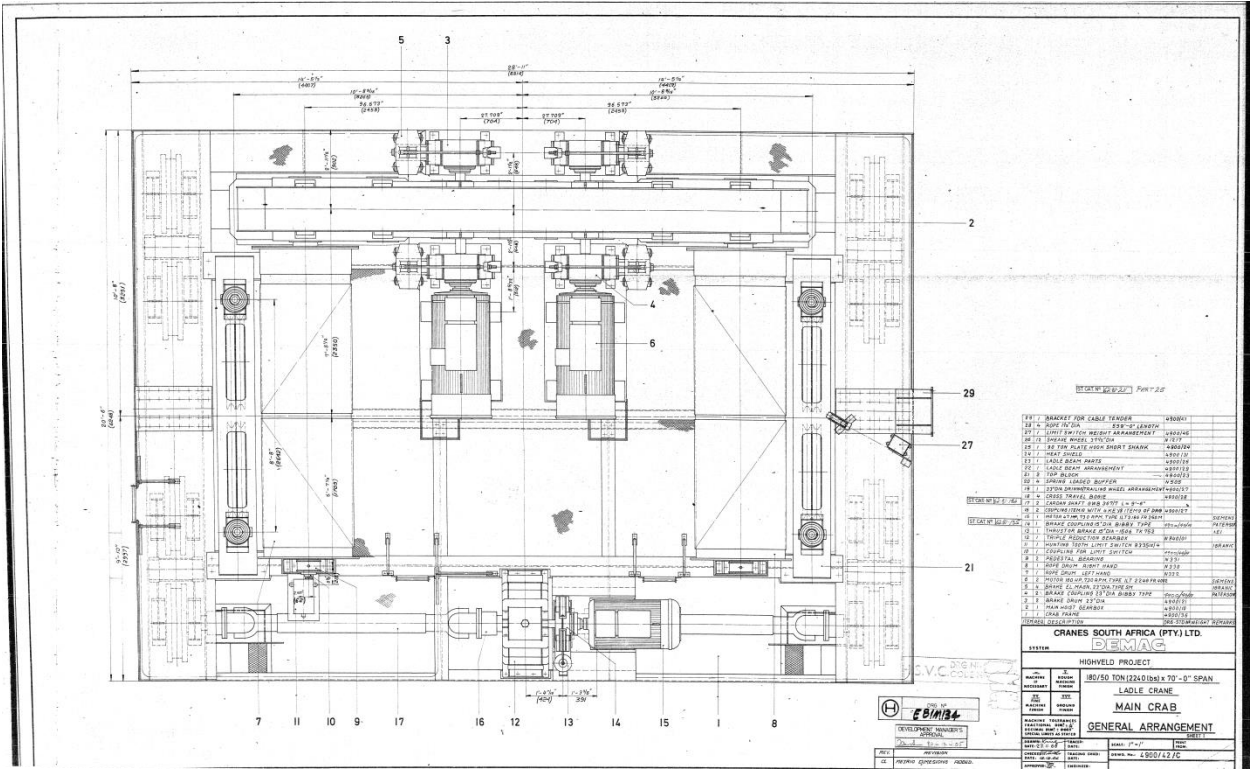
Brake drum 584mm diameter
Brake coupling 584mm diameter Bibby type
Rope drum 1140mm diameter
Rope 32mm diameter 125m length
50 ton bottom block

AUXILIARY HOIST CROSS TRAVEL

Crab span 3.505m
Thruster brake 203mm diameter
Brake coupling 203mm diameter Bibby type
2 x Cardan shafts 114mm diameter 990mm length
762mm diameter drive and trailing wheel arrangement

DRAWINGS





PHOTOGRAPHS



